

LAND AUCTION

Lauderdale Co. Miss. - Meridian - Collinsville

High Visibility Commercial Land - Subdivision Lots

Offered in 7 Tracts

Ending - Thursday, September 8 at 6 PM CST

Home Site (West Lauderdale School District) - Clearside Lane, Collinsville

Commercial Land in Growing Area of Meridian (Surrounded by Major Corporations)

Don't Miss this Opportunity to Buy Land at Your Price !

PIONEER

Auction & Realty llc
Senatobia, MS

662-562-6767

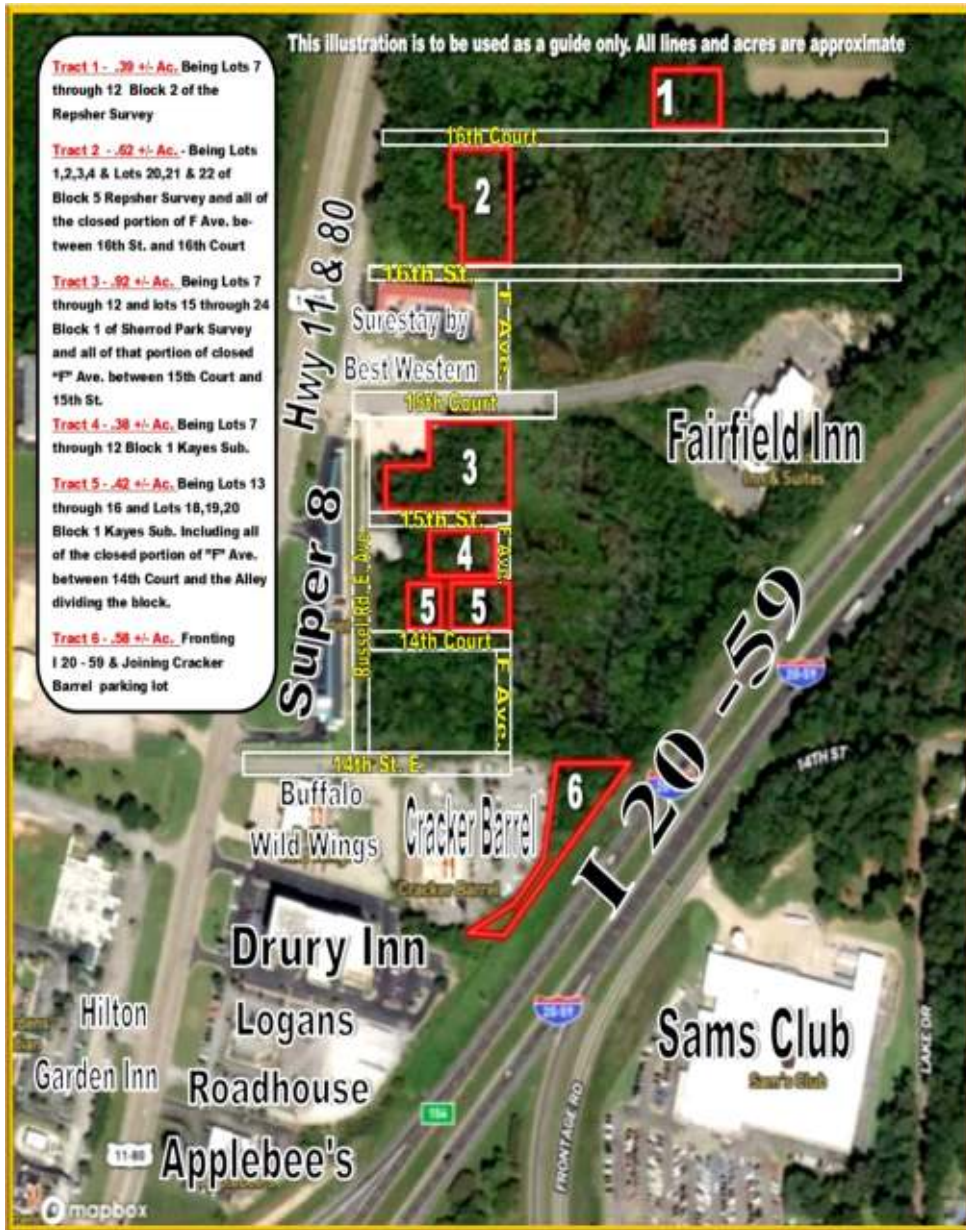
Pioneer - Auctions.com

Kevin Glidewell #130, B11011

ONLINE Bidding Only

**See Website for
Bidding Instructions and
Much More Information**

www. Pioneer - Auctions.com



Directions to Properties : **Indian Springs Estates Subdivision** - From Collinsville travel South on Hwy 19 for 3.5 mi. then left on Okatibbee Dam Rd. for 1/2 mi. then Right on Clearwater Trail then left on Clearside Lane to the lots on the Right.

Meridian Commercial Land - Located on the East side of Meridian between Highway 11 & 80 and I 20 - 59 Nearby Retail, Hotels and Restaurants are noted on the aerial maps

Terms of Auction: Property is Selling in As-Is, Where - Is Condition. A 10% deposit will be due the day of auction with the balance due within 45 days at closing. Pioneer Auction & Realty LLC, its Employees or the Sellers are not responsible for accidents or injuries of any kind. Buyers must do due diligence on their behalf to protect their own interest. All information is believed to be correct but is not guaranteed. All drawings, illustrations, maps, etc. are approximate and are intended to be used as guides only. Announcements made the day of auction may supersede any and all other information. Property will be selling with no contingencies such as, but not limited to, buyers ability to obtain financing. A 10% Buyers Premium will apply to the winning bid to determine the final sales price. See Website for more Terms of Auction.

Bidding will be online - only.